

# Composite Bow Definition

Kamatics Corporation  
 Fax Number 60-769-7702

**KAMAN**

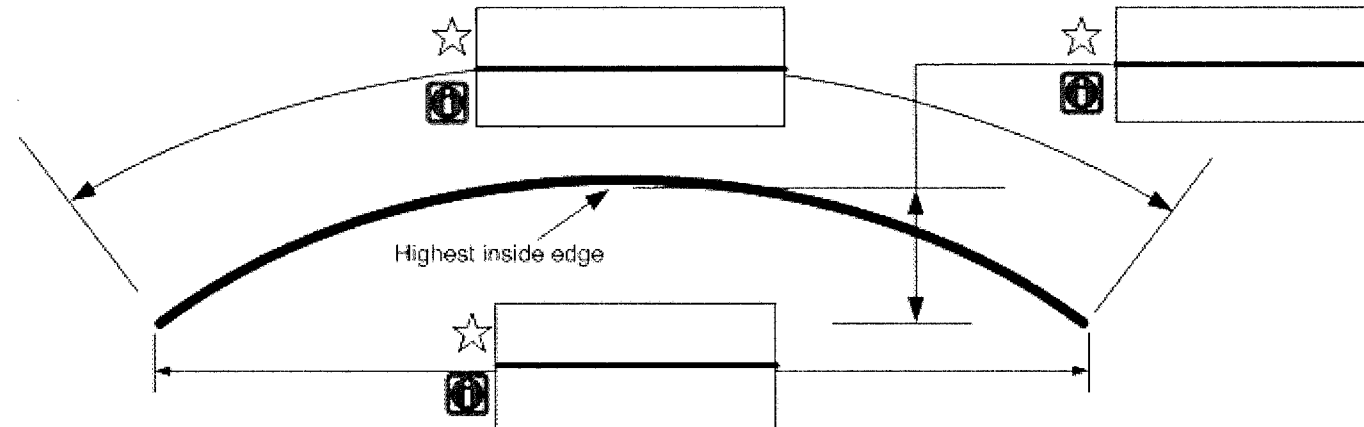
## Machine Brand

- Bekaert
- Caballe
- Ceeco
- Cortinovis
- DeAngeli
- Digeb
- Hamana
- Heinrich
- Kinrei
- MGS
- Miyazaki
- Niehoff
- Northampton
- Nova
- Pourtier
- Redalli
- SAMP
- Setic
- Sket
- TEC
- Watson
- Other

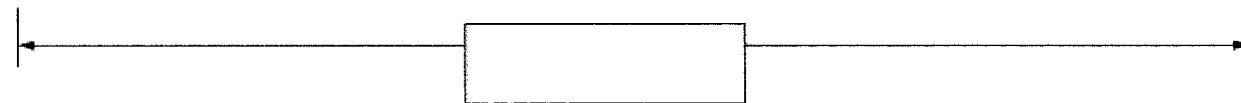
Size (1250, 630)

**NOTICE OF PROPRIETARY RIGHTS**  
 INFORMATION CONTAINED HEREIN IS THE PROPERTY OF KAMATICS CORPORATION. NO RIGHT IN OR LICENSE TO USE, DISCLOSE, OR REPRODUCE IN WHOLE OR IN PART THIS DRAWING OR THE CONTENTS OR SUBJECT MATTER, THEREOF OR ANY DESIGN OR TECHNICAL INFORMATION SHOWN THEREON IS GRANTED OR CONFERRED FOR ANY PURPOSE WHATSOEVER.

☆ = Installed Dimensions      ⊕ = Free state Pre-curved

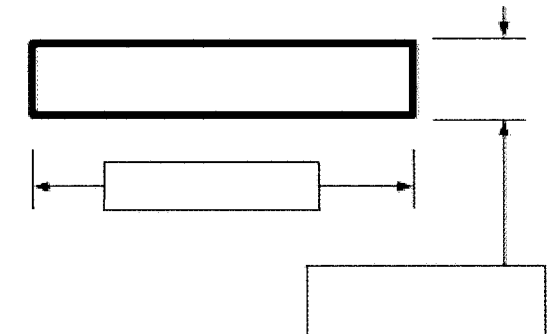
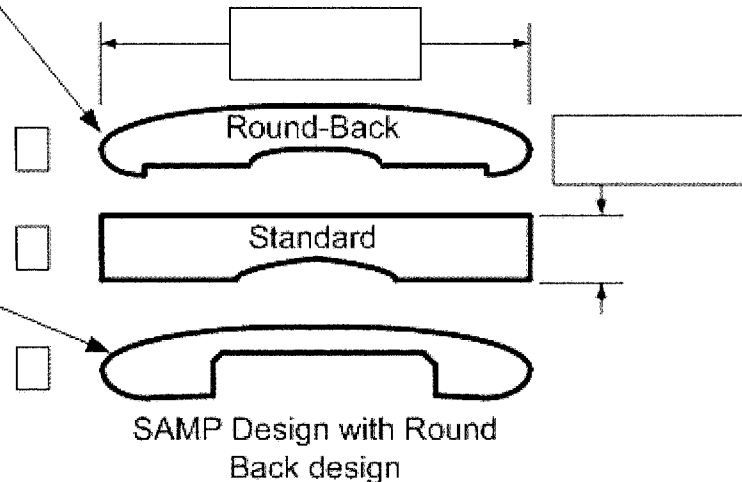


If pre-curved This dimension is in a pressed flat condition otherwise a flat bow length



## Cross Section Definition

US PATENT #5,809,763



IF DIFFERENT  
 Mount Area Dimensions

# Guide & Wire Path Definition

Kamatics Corporation

Fax Number 860-769-7702

**KAMAN**

## Guide Material & Style

- Ceramic 99% White     Tungsten Carbide  
 KAlube Coating on Aluminum for Insulated applications  
 Full Round guide     Half Moon Guide  
 Roller

## Application

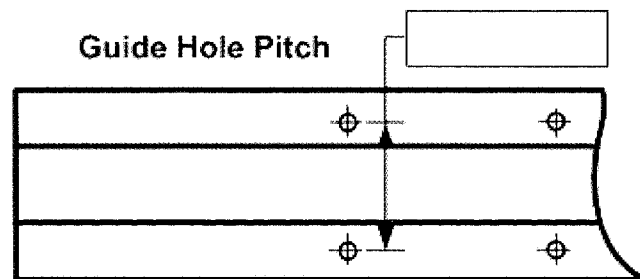
Wire Diameter

- Bare Copper     Plated w/Tin    TPM   
 Bare Steel     Plated w/Nickel  
 Insulated    Other

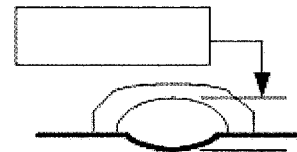
## Guide Attachment

- Conventional Holes  
 Clamp-on-Guide System  US Patent # 6,289,661

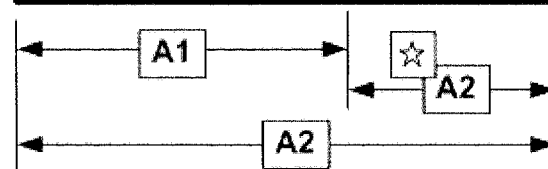
Guide Hole Pitch



Bore Clearance Req'd



Please Consider knot Size



☆ = Your option on how you document these positions, Incremental or all from the end.

A	Inches / Metric		A	Inches / Metric	
1		<input type="checkbox"/>	19		
2		<b>W i r e  P a t h  C h e c k  B o x  F o r  E n t r y</b>	20		
3			21		
4			22		
5			23		
6			24		
7			25		
8			26		
9			27		
10			28		
11			29		
12			30		
13			31		
14			32		
15			33		
16			34		
17			35		
18			<input type="checkbox"/>	36	

NOTICE OF PROPRIETARY RIGHTS  
 INFORMATION CONTAINED HEREIN IS THE PROPERTY OF KAMATICS CORPORATION. NO RIGHT IN OR LICENSE TO USE,  
 DISCLOSE, OR REPRODUCE IN WHOLE OR IN PART THIS DRAWING OR THE CONTENTS OR SUBJECT MATTER THEREOF OR ANY  
 DESIGN OR TECHNICAL INFORMATION SHOWN THEREON IS GRANTED OR CONFERRED FOR ANY PURPOSE WHATSOEVER.

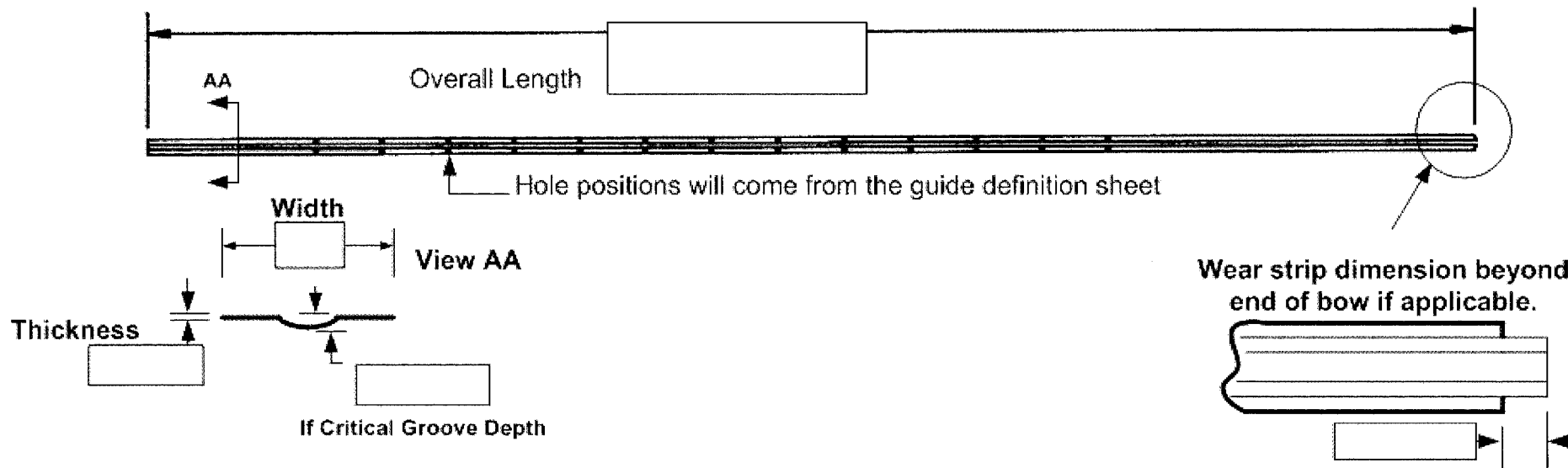
# Wear Strip Definition

Kamatics Corporation

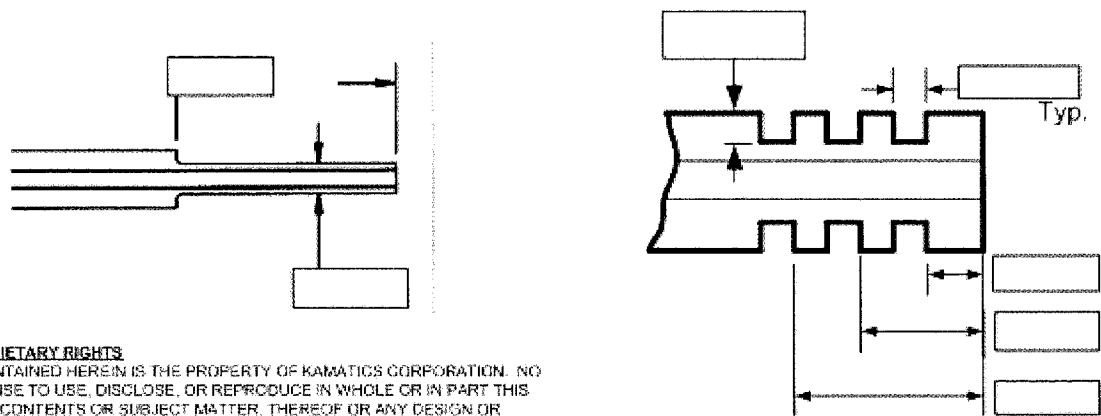
Fax Number 860-769-7702

**KAMAN**

- Standard Steel
- Thermally Treated for improved wear resistance
- KAlube Coating on Aluminum for Insulated applications
- Bumpy Wear Strip 1/4 Pitch



## Definition for Notched Ends



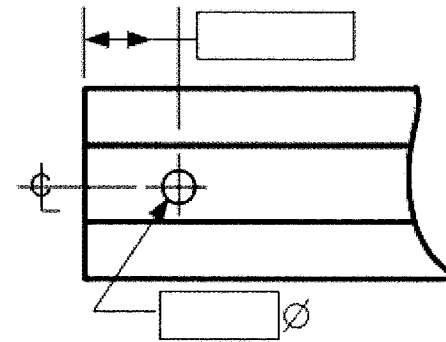
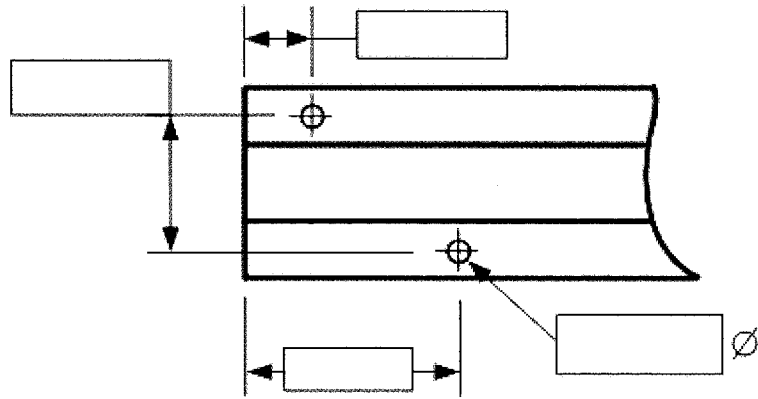
**NOTICE OF PROPRIETARY RIGHTS**  
 INFORMATION CONTAINED HEREIN IS THE PROPERTY OF KAMATICS CORPORATION. NO RIGHT IN OR LICENSE TO USE, DISCLOSE, OR REPRODUCE IN WHOLE OR IN PART THIS DRAWING OR THE CONTENTS OR SUBJECT MATTER, THEREOF OR ANY DESIGN OR TECHNICAL INFORMATION SHOWN THEREON IS GRANTED OR CONFERRED FOR ANY PURPOSE WHATSOEVER.

# Mounting Definition

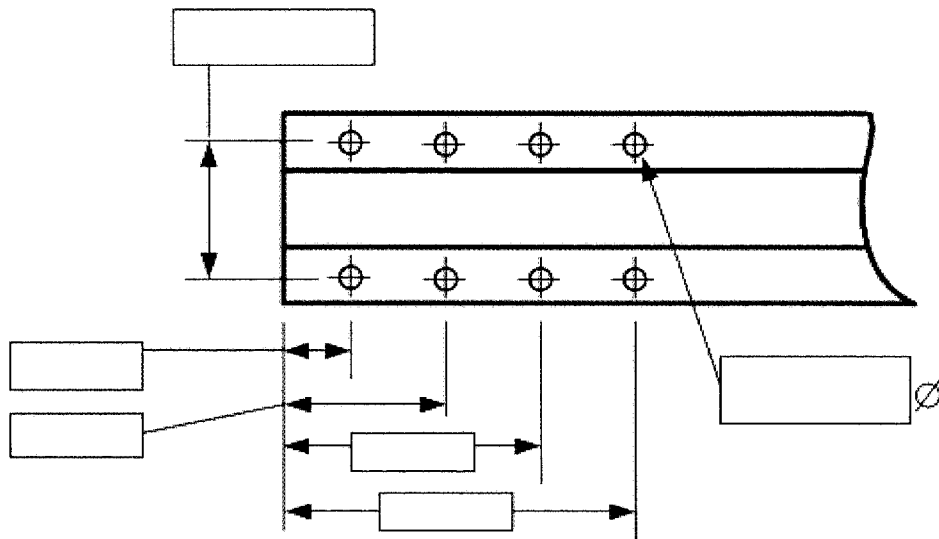
Kamatics Corporation

Fax Number 860-769-7702

**KAMAN**



Mount Holes  
viewed from  
Guide Side



Other - Markup as needed.

**NOTICE OF PROPRIETARY RIGHTS**

INFORMATION CONTAINED HEREIN IS THE PROPERTY OF KAMATICS CORPORATION. NO RIGHT IN OR LICENSE TO USE, DISCLOSE, OR REPRODUCE IN WHOLE OR IN PART THIS DRAWING OR THE CONTENTS OR SUBJECT MATTER, THEREOF OR ANY DESIGN OR TECHNICAL INFORMATION SHOWN THEREON IS GRANTED OR CONFERRED FOR ANY PURPOSE WHATSOEVER.